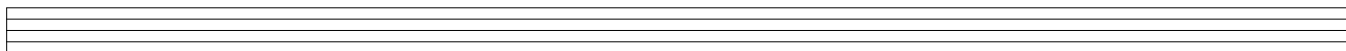
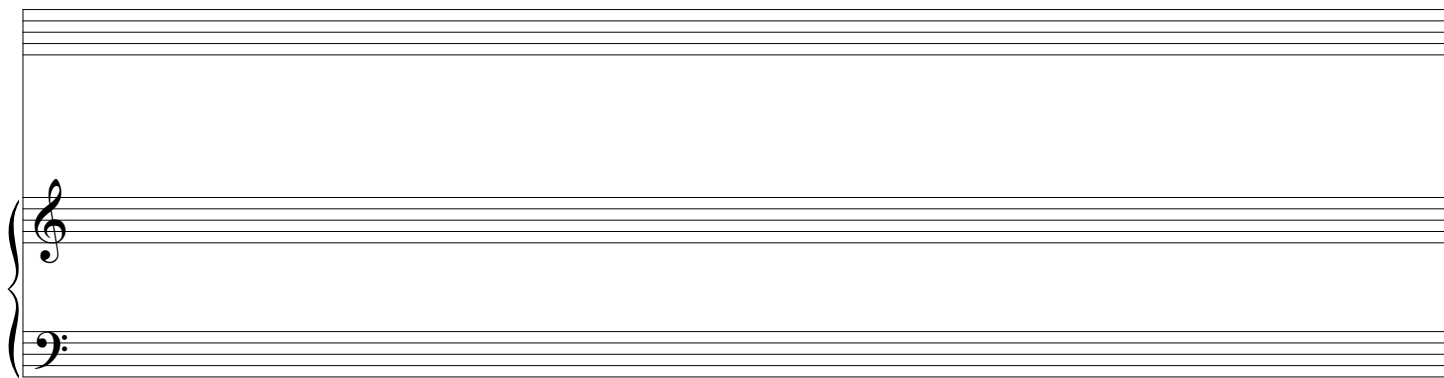
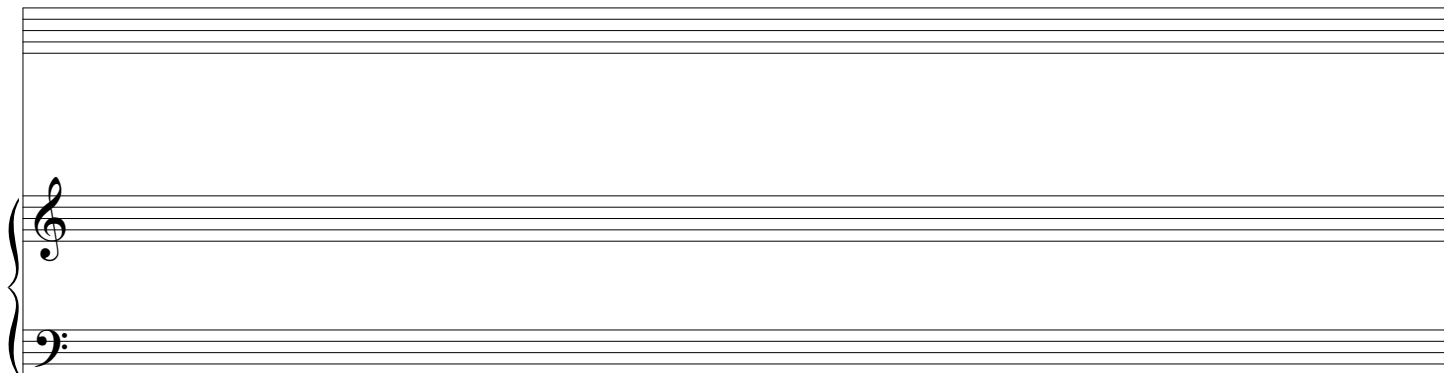
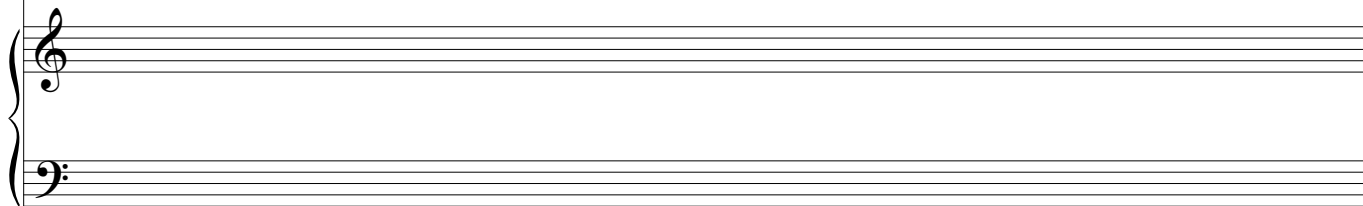


Voz



Piano



A blank musical staff system consisting of two grand staves. Each grand staff is formed by two five-line staves joined by a brace on the left. The top staff of each grand staff has a treble clef, and the bottom staff has a bass clef. The system is completely empty of any musical notation.

A blank musical staff system consisting of two grand staves. Each grand staff is formed by two five-line staves joined by a brace on the left. The top staff of each grand staff has a treble clef, and the bottom staff has a bass clef. The system is completely empty of any musical notation.

A blank musical staff system consisting of two grand staves. Each grand staff is formed by two five-line staves joined by a brace on the left. The top staff of each grand staff has a treble clef, and the bottom staff has a bass clef. The system is completely empty of any musical notation.